

# CATALOGUE

EXHIBITOR'S GUIDE | GRIMALDI FORUM MONACO

- Carpet
- Sign
- Partitioning
- Booth personalized
- Cleaning
- Communication
- Internet access
- Electrical box
- Accessories
- Audiovisual
- Hostess
- Warehouseman
- Security agent

## 5.1 CARPET

- Set up
- Laying with double faces scotch tape while guaranteeing floor protection
- Polyane film removal
- Removal
- Evacuation and recycling

### SHORT PILE CARPET BASIC COLOURS ON ALL SURFACES

Please precise on the order form **the chosen color**.

*For other colours or floor covering please contact our services.*



Black  
REF 270



Grey  
REF 262



Red  
REF 271



Navy Blue  
REF 227



Blue  
REF 265

9,65 € excl tax  
sqm

### SHORT PILE CARPET MINIMUM 25 SQM ACCORDING TO COLOR CHART

Please precise on the order form **the chosen color**.

*For other colours or floor covering please contact our services.*

« Bright colors » :



« Red colors » :



« Black and grey colors » :



« Brown colors » :



12,50 € excl tax  
sqm

### DOUBLE SIDED ADHESIVE TAPE (2,5 CM X 25 M)

For all the carpet not layed by the Grimaldi Forum Monaco, you have to use a double adhesive tape, adapted to our ground.

20,00 € excl tax  
unit

5.2

**SIGN**

Only for the booth built by the Grimaldi Forum in addition to basic equipment.

- Set up
- Fitting
- Removal

**MAKROLON SIGN  
(NUMBER & NAME OF THE STAND) - 150 CM  
20 LETTERS MAXIMUM WITH A TRANSLUCENT FONT  
HIRING, FITTING AND DISMANTLING**

Please precise on the order form **the sign text**.  
After deadline, the sign will be made automatically with the Company name.



**36,00 € excl tax**  
unit

**EXTRA COST FOR LOGO ON SIGN  
SUBSTITUTING THE NAME WITH  
THE COMPANY LOGO**

Please provide a file in JPEG format 300 dpi (High definition)



**54,00 € excl tax**  
unit

**FASCIA SIGN AND STRUCTURE  
INCLUDING DIGITAL IMPRESSION  
20 CM HIGH**

Please contact GFM to obtain all details concerning files to be provided (size and format).  
All files must be received before the deadline indicated on the order form.



**28,00 € excl tax**  
1m

5.3

## PARTITIONING

Only for the booth built by the Grimaldi Forum in addition to basic equipment

### MELAMINE-COATED PANELS WITH ALUMINIUM FRAME 1 M X 2,5 M HIGH

(details upon request)



**41,00 € excl tax**  
1m

### LOCKABLE DOOR ALUMINIUM FRAME 1 M WIDE X 2,5 M HIGH



**115,00 € excl tax**  
unit

### GLASS PARTITION WITH HARD TOP AND BOTTOM AROUND 20 CM

(details upon request)



**82,00 € excl tax**  
1m

Please indicate on the order form «**STAND DIAGRAM**»  
the position of the panels, doors and shelves including the height. Available here →



## 5.3

## PARTITIONING

Only for the booth built by the Grimaldi Forum in addition to basic equipment

### STORAGE 1 SQM

INCLUDING : 1 PANEL AND 1 LOCKABLE DOOR

140,00 € HT  
unit

### STORAGE 2 SQM

INCLUDING : 2 PANELS AND 1 LOCKABLE DOOR

177,00 € HT  
unit

### EQUIPPED STORAGE 1 SQM

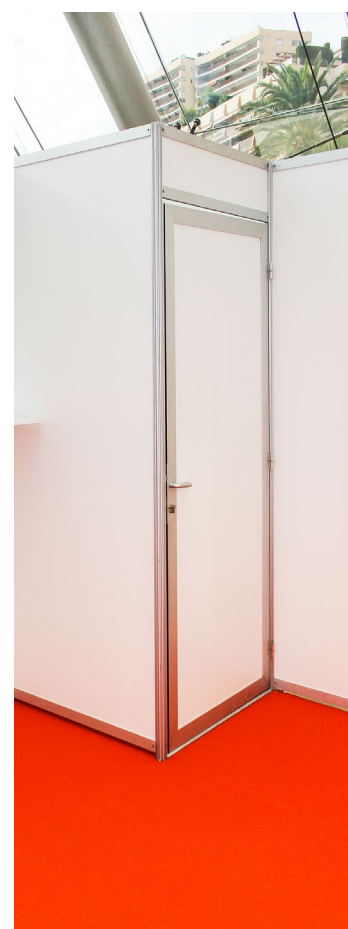
INCLUDING : 1 PANEL / 1 LOCKABLE DOOR /  
2 SHELVES OF 1M AND 1 HAT RACK

217,00 € HT  
unit

### EQUIPPED STORAGE 2 SQM

INCLUDING : 2 PANELS / 1 LOCKABLE DOOR /  
2 SHELVES OF 1M AND 1 HAT RACK

255,00 € HT  
unit



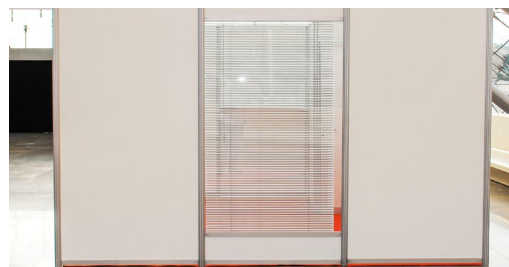
Please indicate on the order form «**STAND DIAGRAM**»  
the position of the panels, doors and shelves including the height. Available here →



## 5.4 PERSONALIZED BOOTH

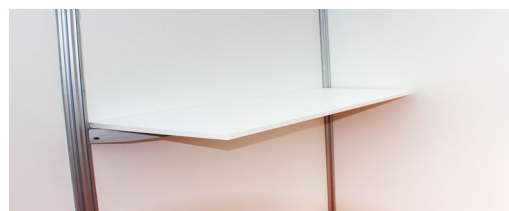
No contractual photos

### ALUMINIUM VENETIAN BLINDS 1 M WIDE X 2,5 M HIGH



**66,00 € excl tax**  
unit

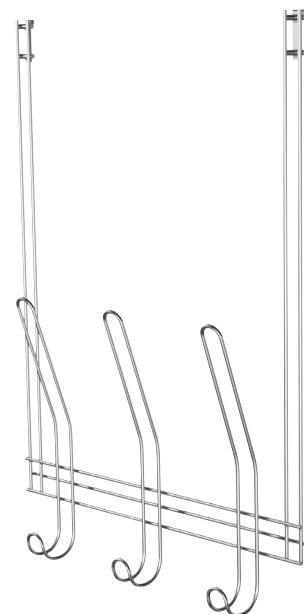
### SHELVES 1M X 0,30 M



**31,00 € excl tax**  
unit

### TRIPLE HAT RACK ALUMINIUM GREY

**44,00 € excl tax**  
unit



Please indicate on the order form «**STAND DIAGRAM**»  
the position of the panels, doors and shelves including the height. Available here →



## 5.4 PERSONALIZED BOOTH

No contractual photos

**ADHESIVE PANELS**  
**DIGITAL PRINTING COVERING ALL THE VISIBLE SURFACE**  
**OF MELAMINE-COATED PANELS (2,5 X 1 M)**



**188,00 € excl tax**  
1m

**BANNER STRETCHED ON FRAME**  
**DIGITAL PRINTING ON A PVC BANNER STRETCHED**  
**OVER A WOODEN FRAME INSERTED INSIDE THE BOOTH**  
**STRUCTURE AND COVERING THE ALUMINIUM POLES**

If it is a booth with storage room, shelf or locked door, please contact our technical department for an estimate.



**246,00 € excl tax**  
1m

**LIGHT BOX**  
**4 CM THICK BACK LIGHT**  
**FABRIC 1 M X 2,50 M**  
**LED LIGHTING**



**468,00 € excl tax**  
unit

Please contact the Grimaldi Forum for all details concerning  
**exact sizes and type of files to provide**  
(high definition and before deadline specified on the order form)



## 5.5 CLEANING

### BEFORE OPENING AND DURING THE SHOW : MARCH 26-27-28, 2026

#### MANDATORY FOR ALL RAW SPACES

- The booth constructed by the Grimaldi Forum are delivered clean and are daily cleaned.
- For booths not installed by the Grimaldi Forum, cleaning before opening and daily cleaning :
  - Disposal of waste and cardboard boxes
  - Removal of protection film and carpets vacuum cleaning
  - Partitions vacuum cleaning
  - Emptying and replacement of rubbish bags
  - Cleaning of rental furniture
  - Disinfection of the booth (all fittings, furniture, computers / mouse / keyboard)
  - Dusting of clear horizontal and vertical surfaces (head height)
  - Removal of fingerprints on objects and mirrors

**3,42 € excl tax**  
sqm / **3 days**

1 Set of bins including :

- 1 regular bin for various wastes
- 1 selective sorting out bin for the packaging and the paper



**13,00 € excl tax**  
event package

Cleaning pack including virucide and microfibre wipe

**12,30 € excl tax**  
event package

### AFTER THE SHOW

Removal and cleaning of the carpet, supplied and laid by the exhibitor / stand builder  
**For the booths not installed by the Grimaldi Forum ONLY.**

**7,20 € excl tax**  
sqm



## 5.5 CLEANING

- The Grimaldi Forum uses selected **eco-labeled products**.
- The Grimaldi Forum has set up a selective sorting of waste at all stages of its activity. By ordering a sorting rubbish bin, you contribute to develop this approach by recycling your waste according our customs.
- During the set-up of stands, the GFM put at disposal of the builders **several kinds of containers** to allow a recycling adapted to your waste:
  - Boxes
  - glasses
  - wood
  - paper
  - non-recoverable materials (wastes, plastic, non-recyclable carpets...). The plan of their location is available on site.
- **Every evening** during the exhibition, **please leave your waste in the aisles** separating bottles and boxes of other wastes.
- At the end of the event, **the space must be returned cleaned of all waste**. It belongs to the exhibitor for the evacuation of waste and in case of raw space, all elements of the stand including carpet. The Grimaldi Forum can put at your disposal **big bins (waste or wood)**, subject to estimate, to leave the space cleaned.
- Waste left on site will be charged to the exhibitor on simple presentation of a unilateral statement by the Grimaldi Forum. When you leave, you can ask to make a declaration to the technical assistant that you have left your stand cleaned of all waste.

## 5.6 COMMUNICATION

**ANALOGUE LINE FOR EXHIBITORS CB WITHOUT EXTENSION  
INCLUDING A COMMUNICATION FEE OF € 20.00 EXCL.**  
(calls outside the package will be charged at 40%)

**102,00 € excl tax**  
event package

## 5.7 INTERNET

### PRO CONNECTION

This connection includes 1 RJ45 plug  
or 1 WIFI antenna as your choice :

#### CABLE ACCESS

#### WIFI With SSID and password

- For WIFI (8 letters minimum)

SSID : .....

Password : .....

**WARNING :** If the choice is not precised  
by the exhibitor, the connection will be  
automatically configured with WIFI.

#### PACKAGE 4 DAYS

(3 days event +  
set up the day  
before) **excl tax**

<b>5MB</b>	<b>1176,00 €</b>
<b>10MB</b>	<b>1849,00 €</b>
<b>20MB</b>	<b>2932,00 €</b>
<b>30MB</b>	<b>3820,00 €</b>

*Until 200mb on request*

### ADDITIONAL OPTIONS Only for PRO CONNECTION

#### CABLE ACCESS

**ADDITIONAL CABLE ACCESS - RJ45 PLUG**

**104,00 € excl tax**  
event package

**FIXED/PUBLIC IP ADDRESS PUT AT DISPOSAL**

**104,00 € excl tax**  
event package

#### STAFF

**CONFIGURATION ASSISTANCE**

**122,00 € excl tax**  
per hour

Please specify **the plug RJ45 position** in the form «**STAND DIAGRAM**»

Available here →



5.8

## ELECTRICAL BOX

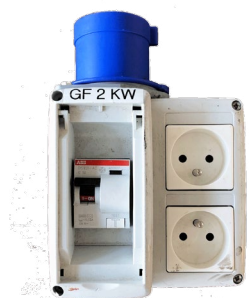
In addition to the eventual stand package

**ELECTRICAL BOX WITH 1 SOCKET 10/16A AVAILABLE AT LEAST**  
(Some plugs are used for the rails installation and for your material)

### MONOPHASE - 220V

Power of 1 to 2 KW  
21x13cm

**239,00 € excl tax**



Power of 3 KW  
21x23cm

**267,00 € excl tax**



Power of 6 KW  
41x25cm

**332,00 € excl tax**



### MONOPHASE AND TETRA - 380V (3P + N + T)

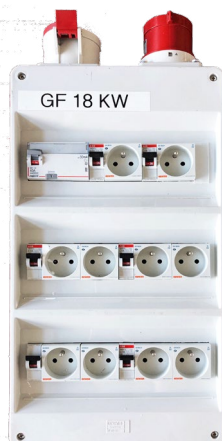
Power of 9 KW  
1 x P17 - 16A TETRA  
+ PC 10/16A  
41x25cm

**399,00 € excl tax**



Power of 18 KW  
1 x P17 - 32A TETRA  
+ PC 10/16A  
54x25cm

**597,00 € excl tax**



Please note on the order form «**STAND DIAGRAM**»

**the position of the electrical box.** Available here →



## 5.9 ACCESSORIES

### PURCHASE OF ACCESSORIES POSSIBLE ON SITE ONLY :

<b>EXTENSION LEADS 3M OR 5M</b>	<b>15,00 € excl tax</b> unit
<b>EXTENSION LEADS 10M</b>	<b>20,00 € excl tax</b> unit
<b>MULTI PLUGS</b>	<b>15,00 € excl tax</b> unit
<b>UNIVERSAL ADAPTATORS</b>	<b>16,00 € excl tax</b> unit

To help you to determine the power required :

- Coffee maker : 1,5 KW (in average)
- Refrigerator : 0,2 KW
- Computer : 0,2 KW
- Printer : 0,2 KW
- Rail of 3 spotlights : 0,3 KW
- Hairdryer : 2,0 KW



### GENERAL QUOTE

- The electrical box will be located on your booth according to the stand diagram. All site modifications will be charged a minimum of 64 € (vat excl).
- Each box can supply one stand only.
- Power boxes are under the responsibility of the Grimaldi Forum. For safety reasons, it is strictly forbidden to modify the connections on the boxes.
- Downstream of the electrical box, special facilities will be carried out under the responsibility of the exhibitor or the company of this choice.
- The equipment installed remains the property of the Grimaldi Forum. In case of damage or theft, the price of the box will be charged.

5.10

## ELECTRICAL INSTALLATION

Hiring of material in addition to an eventual basic electricity supply\* of the modular stand.

*Agata spotlights provided on the basic electricity supply. This service is only available for stands set up by the GF.*

### RAIL OF 3 SPOTS « AGATA » - 9W LED



**97,00 € excl tax**  
event package

### ADDITIONAL SPOTLIGHT « AGATA »



**35,00 € excl tax**  
event package

### RAIL OF 3 SPOTS « NUOVO » - 9W LED



**97,00 € excl tax**  
event package

### ADDITIONAL SPOTLIGHT « NUOVO »



**35,00 € excl tax**  
event package

### INSTALLATION OF A PLUG ACCORDING TO A PLAN 10/16A STAFF INCLUDED

The electrical equipment will be located on your booth according to the stand diagram.  
All site modifications will be charged a minimum of 64 € excl tax.

**65,00 € excl tax**  
event package

Please ensure that you order **the correct power supply.**



5.11

## AUDIOVISUAL

Rates include delivery and set up the day before show opening, technical assistance on site and dismantle. No special set up, on wall etc... Rates include damage insurance but insurance in case of theft is at the client's expense. Equipment subject to availability.



## SCREENS

Rental monitor 4K player integrated (sound included) : Rates including a wall support reinforced partition :



Delivery and installation included

### PACKAGE 3 DAYS

LED 43" (96,4 x 55,4cm)	563,00 € HT
LED 55" (121,8 x 68,5cm)	950,00 € HT
LED 65" (143,9 x 80,9cm)	1236,00 € HT
LED 75" (166 x 93,4cm)	2011,00 € HT
LED 98" (219 x 124cm)	4123,00 € HT

32" on estimate

MORE  
+

## SUPPORTS Only in addition to the rental of a screen :

### PACKAGE 3 DAYS excl tax

#### WALL PLATE

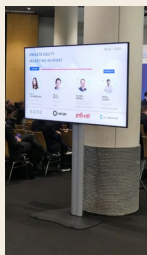
Included

#### WALL SUPPORT FOR SCREENS FROM 32" TO 65" ON RAILINGS (PACKAGE) • On modular booths only



155,00 € HT

#### DESIGN SUPPORT STAND FOR SCREENS 32" TO 75"



218,00 € HT

#### BEYOND 75"

on estimate

Please specify **in the order form** if you are connected to :

- PC HDMI
- USB key

**OFFICE/ACROBAT files on USB key are not available.**

Screen media can be sent in advance of the show to the exhibitor manager. They will be downloaded, checked and set up on the screen before the exhibitor arrives.

Please note on the order form  
« **STAND DIAGRAM** » **the position of  
the screen.** Available here →





5.12

## HOSTESS

These rates apply for daily hours from 7 am to 9 pm.  
For any other timing or bank holidays, please contact us.

Independently of the way your products are presented, maximize the potential of your team.  
Welcome your guests with a smile, be helped for the first contacts or the distribution of your documentation ...

### BILINGUAL HOSTESS FR/EN ON STAND DAY TIME SERVICE 8 HOURS

For example : from 09:00 am to 01:00 pm and from 02:00 pm to 06:00 pm  
with one hour break

**280,00 € excl tax**  
per day

### BILINGUAL HOSTESS FR/EN ON STAND 4 HOURS SERVICE MINIMUM

**168,00 € excl tax**  
4 hours service

### BILINGUAL HOSTESS FR/EN ON STAND ADDITIONAL HOUR

**42,00 € excl tax**  
per hour

### HOSTESSE MEAL

Mandatory for any day with 8 hours of work and more

**15,90 € excl tax**  
unit

#### Please mention on the ORDER FORM :

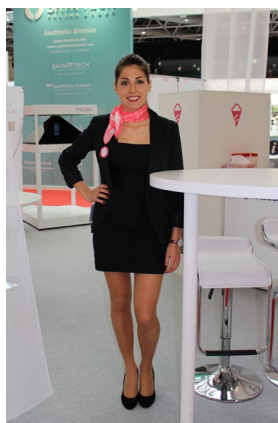
- dates and timings
- mission and task
- language
- clothes (available uniforms on request)
- contact name during the event

Our department is at your disposal for any particular request : multilingual, particular languages, model..  
Please contact your exhibitors advisor. **(Contact information page 4)**



## CANCELLATION CLAUSE

The hourly amounts may be adjusted by more or less 10 percent between the 15th and the 5th business day before the event.  
After this recommended date, the service must be paid in full.



5.13

## WAREHOUSEMAN

These rates apply for daily hours from 7 am to 9 pm. For any other timing or bank holidays, please contact us.

Strengthen and complete your team by receiving help for various handling.  
**WARNING : Warehouseman have no tools.**

WAREHOUSEMAN  
4 HOURS SERVICE MINIMUM

147,00 € excl tax  
4 hours service

WAREHOUSEMAN  
ADDITIONAL HOUR

37,00 € excl tax  
per hour

5.14

## SECURITY

These rates apply for daily hours from 7 am to 9 pm (for security guards). For any other timing or bank holidays, please contact us.

The supervision of the Grimaldi Forum is insured 24h/24h and 7 days a week,  
Please order a security agent dedicated to the supervision of your stand and of your products ...

### SECURITY GUARD

SECURITY GUARD ON STAND  
4 HOURS SERVICE MINIMUM

131,00 € excl tax  
4 hours service

SECURITY GUARD ON STAND  
ADDITIONAL HOUR

32,70 € excl tax  
per hour

### VIDEO SURVEILLANCE

PERSONALISED STAND MONITORING

443,00 € excl tax  
event package

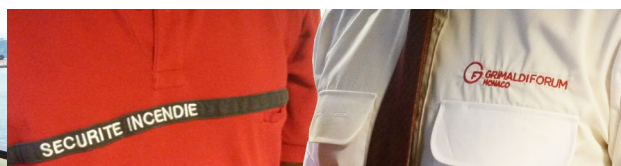
PERSONALISED STAND MONITORING WITH A DEDICATED VIDEO OPERATOR

ON ESTIMATE

### FIRE DETECTION

FIRE DETECTOR ON STAND

235,00 € excl tax  
event package



Please mention on the order form :

- dates and timing
- mission and task



### CANCELLATION CLAUSE FOR SECURITY

The hourly amounts may be adjusted by more or less 10 percent between the 15th and the 5th business day before the event.  
After this recommended date, the service must be paid in full.