

3.1 GOODS LIFT

The dimensions of the service lifts available in the exhibition halls are as follows :

The use of the exhibitor's own trucks or lifting machinery is subject to written authorization prior to the event.

| | | | | | | | EXTENSION | |
|----------------------|----------------------------|---------------------------|----------------------|-------------------------------|----------------------|--|-----------------|-----------------|
| | MC 1 | MC 2 | MC 4 | MC 6 | MC 8 | | MC 20 | MC 21 |
| Live loads (Tons) | 4.50 | 4.80 | 4.125 | 4.05 | 4.25 | | 4.40 | 4.50 |
| Cabine dimension (m) | | | | | | | | |
| Width * | 2.00 | 2.00 | 2.00 | 1.80 | 2.00 | | 2.00 | 2.50 |
| Depth | 3.95 | 4.30 | 3.80 | 4.00 | 3.80 | | 4.10 | 5.50 |
| Height | 2.20 | 2.20 | 2.20 | 3.40 | 3.60 | | 2.50 | 2.50 |
| Clear passageway (m) | | | | | | | | |
| Width | 1.58 | 1.58 | 1.94 | 1.58 | 1.98 | | 2.00 | 2.50 |
| Height | 2.08 | 2.08 | 2.08 | 3.48 | 3.49 | | 2.50 | 2.50 |
| Spaces Served | | | | | | | | |
| Level 2 | Génois | Guelfe | / | / | / | | | |
| Level 1 | Ravel Indigo | Ravel | Ravel | / | Ravel | | | |
| Level 0 | Hall | / | Outdoor Delivery Bay | / | Outdoor Delivery Bay | | | |
| Level pinède | / | / | / | / | / | | Pine Trees Hall | Pine Trees Hall |
| Level -1 | Diaghilev East | Diaghilev North / South | / | Diaghilev South & bus parking | / | | Logistics zone | Logistics zone |
| Level -2 | Upper Lobby Breakout rooms | Upper Lobby Breakout room | / | Breakout rooms | / | | | |
| Level -4 | Indoor Delivery Bay | Indoor Delivery Bay | / | / | / | | | |

* Dimensions do not include hand rails

3.2 LOAD CAPACITY

Permitted weight limits for loads at floor level in the main exhibitions areas are as follows :

| | |
|---|----------------------------|
| DIAGHILEV SPACE (MEZZANINE) - UPPER LEVEL | 500 kg per sq.m. |
| DIAGHILEV SPACE (MEZZANINE) - LOWER LEVEL | 500 kg per sq.m. |
| GUELFE AND GÉNOIS SPACES (2nd FLOOR) | 400 kg per sq.m. |
| RAVEL SPACE (1st FLOOR) | 1000 kg per sq.m. |
| FOYER (LOWER GROUND FLOOR) | 500 kg per sq.m. |
| ESPLANADE (FLOOR 0) | 1000 kg per sq.m. |
| INDIGO SPACE (1st FLOOR) | 500 kg per sq.m. |
| HALL SPACE (FLOOR 0) | 500 kg per sq.m. |
| LE CARRÉ | 500 kg par m ² |
| GALERIE DIAGHILEV | 500 kg par m ² |
| PARVIS EMERAUDE | 1000 kg par m ² |
| SALLES PATIO | 500 kg par m ² |

These load restrictions are not only valid for the installation of exhibits but also for their transportation within the Grimaldi Forum.

3.3 WATER CONNECTION

All requests for water connection will be reviewed by the Events Department and, if approved, a price quotation will be sent to the client.

3.4 VELUM

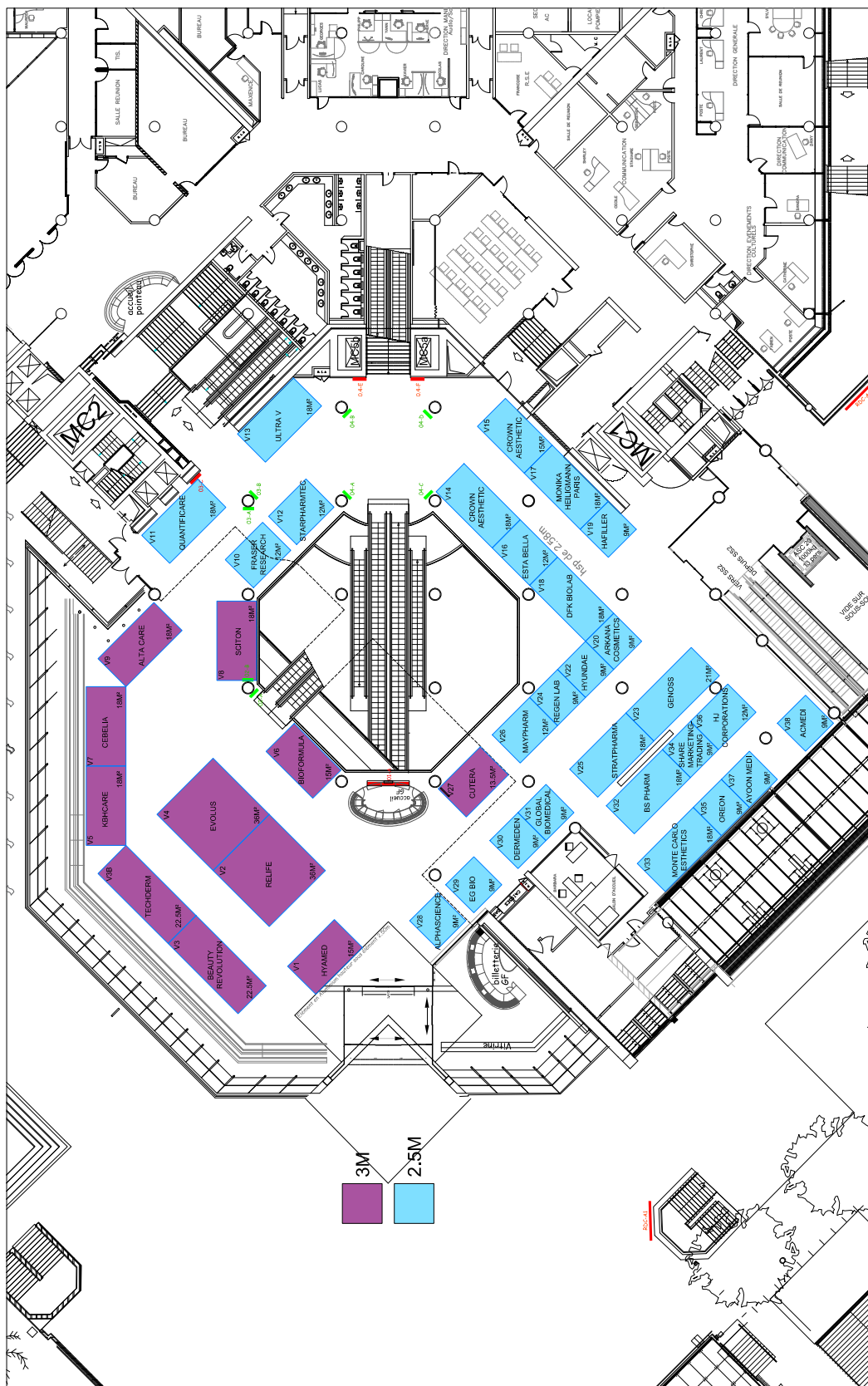
It is mandatory that all the velums are micro-perforated or openworked in order to allow the correct functioning of sprinklers and fire detection.

3.5 CEILING HEIGHT

The clear ceiling heights vary in the exhibition areas. If necessary, the exhibitor can contact the Events Department to obtain full information concerning this, depending on the booth location.

**THE AMWC 2026 REGULATION IS IMPOSING MAXIMUM OF
STAND HEIGHTS**

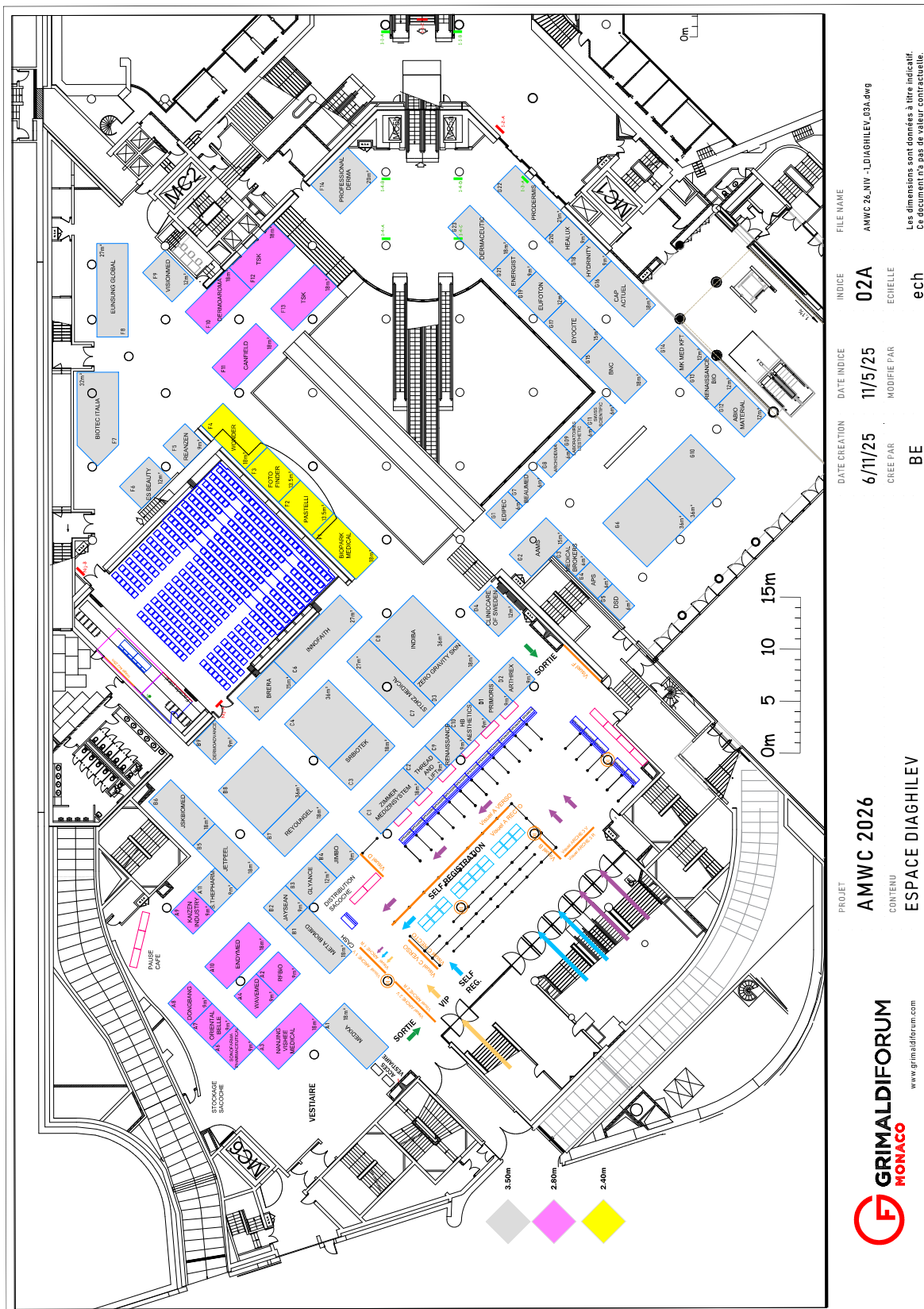
GLASS ROOF (Level 0) *non-contractual plan



Les dimensions sont données à titre indicatif.
Ce document n'a pas de valeur contractuelle.

| PROJET | AMWC 2026 |
|---------------|----------------------------|
| CONTENU | ESPACE HALL |
| DATE CREATION | 6/3/25 |
| DATE INDEX | 11/5/25 |
| INDEX | 01A |
| FILE NAME | AMWC 26_NIV 0_HALL_01A.dwg |
| MODIFIE PAR | PA |
| ECHELLE | ech |

DIAGHILEV (Level -1) *non-contractual plan

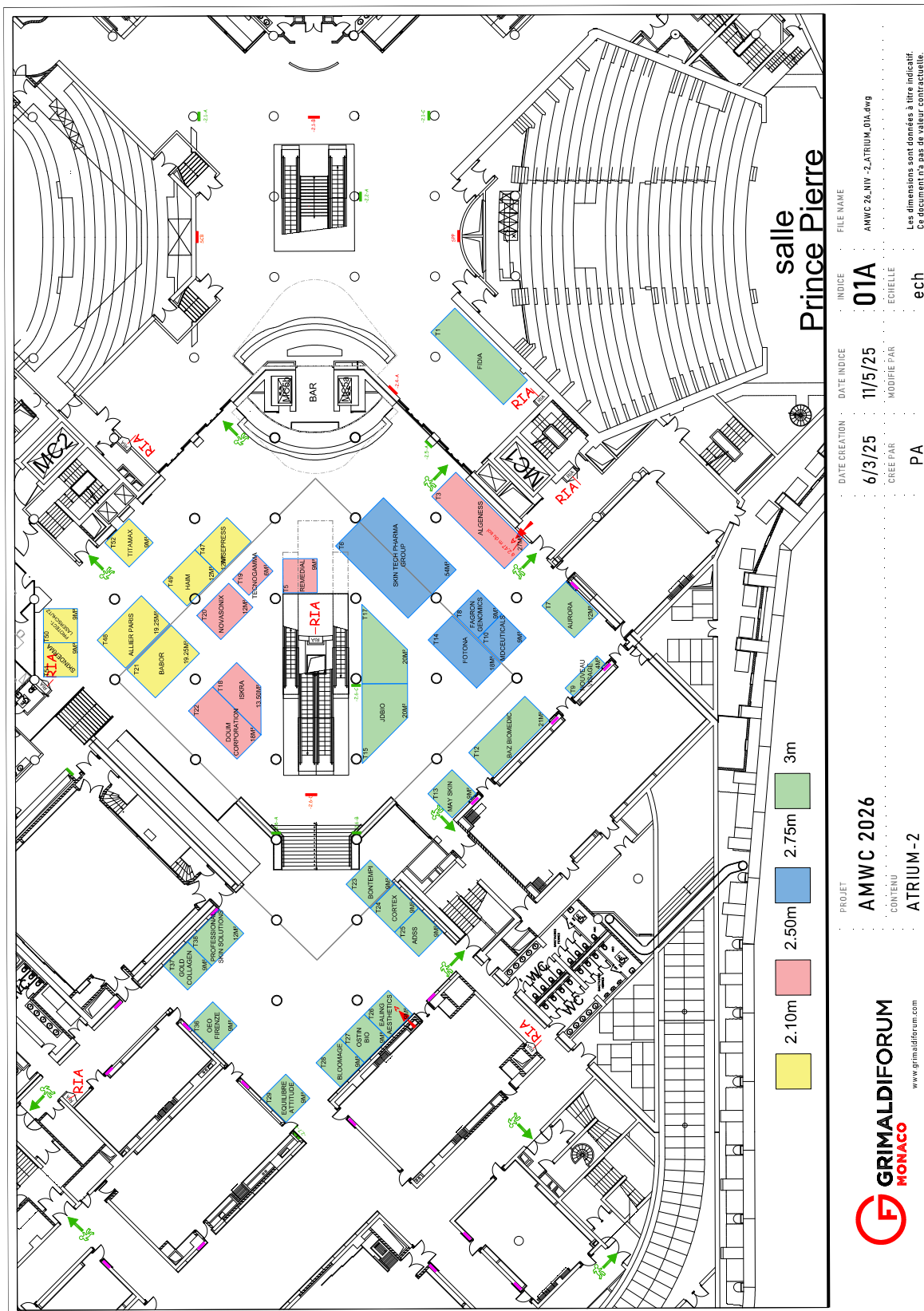


DIAGHILEV GALLERY (Level -1)

*non-contractual plan



ATRIUM (Level -2) *non-contractual plan



4.1 SAFETY RULES

A/ CHIEF FIRE SAFETY OFFICER

Booth designed and fitted by exhibitors must comply with :

- the safety rules covering fire and panic risks in buildings open to the public
- the instruction given by the Chief Fire Safety Officer appointed for the Exhibition

- Exhibitor's must submit their booth project to the Grimaldi Forum **on February 13 at the latest with a technical plan with the stand height for study and agreement by INFORMA & the GRIMALDI FORUM.**
- Fire proof minimum M3 is mandatory for all stands and M1 for ceilings.
- Hanging points on estimate only available for RAVEL space (level+1) : please contact Matthieu Testory for all request.
- For all areas concerned, it is mandatory that all the velums are micro-perforated or openworked in order to allow the correct functioning of sprinklers and fire detection.

For booths not fitted by the Grimaldi Forum the file must contain :

- Drawings
- **SAFETY QUESTIONNAIRE** (see specific form hereafter) in the section « **ORDER FORMS** »
- All the certificates concerning material fire rating and issued by an approved French Laboratory with calculation and details concerning roof, wall clothing...
- Electrical installation description
- Declaration form for « **ORDER OF DESCRIPTION OF EQUIPMENT OR MACHINERY DISPLAY IN OPERATION** » in the section « **ORDER FORMS** »
- Applications for authorization to use appliances generating an open flame, heat engines or combustion engines, smoke generator, butane or propane gas, dangerous gas (Acetylene, oxygen, hydrogen...), radioactive substance, X-rays, lasers

If necessary the booth project will be modified according to the Chief Fire Safety Officer's requirements.

The declaration form for electricity supply not installed by the Grimaldi Forum must be approved by our Chief Fire Safety Officer at least the day before the Safety Committee's inspection.



If the stand has a derogation to exceed the height defined by the organiser for the entire exhibition, it is imperative to provide finishes of decoration for the back of the stand.

B/ MATERIALS RATING

The materials used in booth construction must be conform with the fire ratings indicated in the safety questionnaire.

These ratings will be justified by valid certificates issued by agreed laboratories. The certificate issued must correspond to the combination of structure / adhesive / wall covering actually used in the booth. French fire regulations and materials ratings are the only ones applicable.

French fire ratings are as follows :

M0 = Fireproof materials

M1 = Non flammable materials

M2 = Low flammability materials

M3 = Medium flammability materials

M4 = Flammable materials

C/ SIGNS

The combination of white lettering on a green background is reserved for general safety signs only. It is strictly forbidden to use these colours for signs above the booth.

D/ FLOORS

Ministerial Decree No. 2017-893 of 21 December 2017, adopted pursuant to Law No. 1.441 of 5 December 2016 on the accessibility of the built environment in the Principality of Monaco, establishes precise requirements aimed at ensuring the accessibility of exhibition halls with stands. **Each stand must be accessible through an entrance without a threshold or equipped with an inclined threshold. If an elevation of less than or equal to 2cm cannot be avoided, it must be rounded or equipped with a cut-off (inclined) angle. This elevation can be up to 4 cm if a gentle slope (maximum 33%) is present over its entire height.** Successive steps are prohibited. Furniture, equipment and signage must be designed to be usable by all, especially by people with reduced mobility or of small size. In addition, elevators serving all levels accessible to the public are located at strategic locations of the building, to ensure smooth circulation and compliance with accessibility standards.

E/ SIGNPOSTING AND ACCESS TO FIRE SAFETY EQUIPMENT

The layout of the booth must not hide the general safety signals indicating the location of exits and emergency exits. Fire fighting and emergency equipment must not be hidden or obstructed. This includes fire extinguishers, fire hose cabinets, glass breaking instruments and emergency wall phones.

F/ ELECTRICAL EQUIPMENT ON BOOTH

All electrical equipment on the booth must be installed by professionals or people who have expert knowledge of the safety rules concerning the equipment. The exhibitor is responsible for electrical equipment from the supply box provided on the booth. The exhibitor must complete the security information form for the electrical display. The supply box on the booth must not be accessible to the public, but easily accessible at any time for internal staff.

Electrical power will be turned on during event opening hours only. Exhibitors requiring a 24 hour supply should contact the Operations Department (see order form - Electricity supply). Any installations which do not comply with the regulations will not be supplied with electricity.



FORBIDDEN :



- Any modifications of the technical specifications in the supply box (location, switches, ...)
- Cables including conductors with a cross-sectional area less than 1,5 mm², at least for power points
- Cables insulated for a voltage below 500 V cable H03VH-H (scindex)
- Splices in cables
- Connections not protected by «plexo»-type junction boxes
- Two-pole 6A multiple sockets and adaptors.
- Unsecured sockets.
- Discharge lamps which are not in accordance with NFC 15 150 standards

COMPULSORY :



- There must be permanent access to the supply box (No access to the public)
If the supply box is in a locked area, power must be turned off when the booth is not manned.
- Class 1 equipment must have an earth connection 
- Halogen lamps must have at a minimum height of 2.25 m, securely fixed, far from any flammable materials, equipped with a safety shield made of glass or similar (wire netting is no longer allowed)
- Class 2 (two) equipment, double insulation, symbol 
- Illuminating garlands must have C2 (two)-rated cables and sockets fixed to the power leads

RECOMMENDED OR AUTHORIZED :

- Three-pin multiple sockets and adaptors 10A/16A

G/ COMBUSTIBLE MATERIALS

- It is strictly forbidden to store wood, paper, straw, cardboard and packaging materials which are a fire hazard in the exhibition areas, the booths, the areas behind them and the cabins.
- The use of gas and flammable liquids is absolutely forbidden inside the Grimaldi Forum.

H/ SAFETY AT WORK

The exhibitor agrees to make the staff, acting directly or indirectly on its behalf at the Grimaldi Forum, respect all the safety regulations and wear all compulsory individual safety equipment.
Failing to respect these safety instructions entails the exhibitor's liability.
The Grimaldi Forum reserves the right to intervene and halt work deemed dangerous.

I/ PROTECTION OF THE PUBLIC

Exhibitors are fully responsible for all displays and demonstrations they hold. Machines with moving parts, hot surfaces, point or sharp edges, must either be fitted with appropriately anchored screens or casings, or, set back at least one meter from the aisles. When these machines are on display, a barrier must be set up around them so that all dangerous parts are out of reach of the public.

If machines with hydraulic jacks are displayed with the jack fully extended, a mechanical device must be fitted in addition to the hydraulic safety devices on the jack, to prevent an accidental collapse. All machines must be stabilized to prevent them from overturning.

J/ SAFETY COMMITTEE

All booths must be finished before the Committee's inspection visit the day before, or the morning of the event's opening. The exhibitors or their qualified representative must be present at their booth during this inspection and must be able to supply all information and certificates concerning equipment and materials used.

The decisions taken by the administrative authority, on the recommendation of the Committee following its inspection visit, can go as far as a ban on the use of the booth, and must be carried out immediately.

The Grimaldi Forum and the organizer refuse to accept any responsibility if the Safety Committee decides to close a booth because the exhibitor has not respected the safety rules.

Please fill in and send us the order form « **SECURITY** ».
MANDATORY RETURN FOR THE BOOTH OPENING. *Available here* →



K/ AMWC ORGANISATION RULES - SPACE RAVEL

CAUTION

PLEASE RESPECT THE FOLLOWING SECURITY RULES

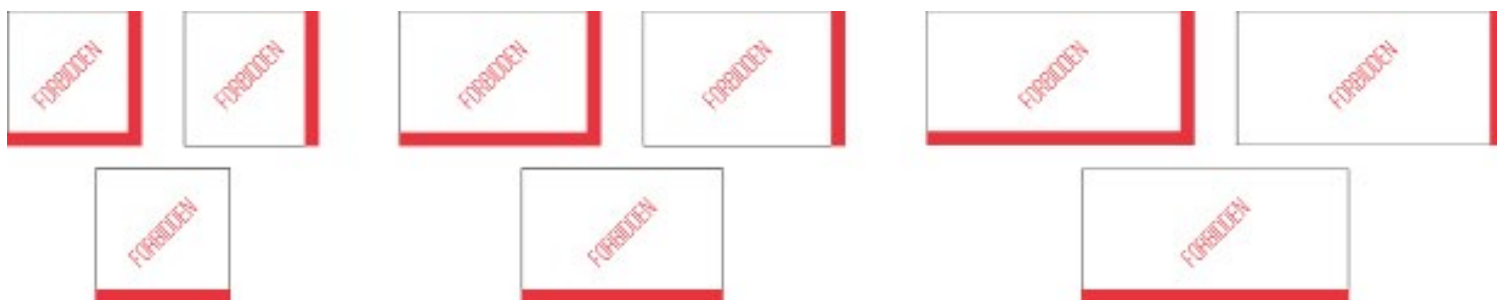
For island booths with a size of 36 sqm or more, the exhibitors are not allowed to close totally one or several sides of the booth (See pictures opposite).

- Sides of 6m long cannot have walls over 2m long. Those walls must have an open side between them of at least 2m long (Except for the corners).
- Sides over 6m long cannot have walls over 3m long. Those walls must have a free space between them of at least 2m long (Except for the corners).

Layout of booths over 36 sqm must be sent to the organisation by email to mathieu.boronad@informa.com for validation.



FORBIDDEN KINDS OF WALLS :



SAMPLES OF ALLOWED WALLS :

